

# INTELLECTUAL PROPERTY

The Mitsubishi Electric Group is vigorously promoting intellectual property activities worldwide in support of global business development.

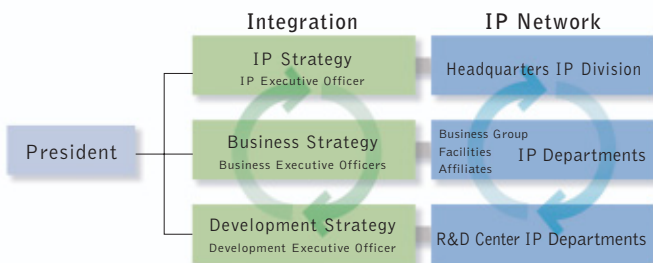
The Mitsubishi Electric Group recognizes its intellectual property ("IP") as a vital management resource for the development of its business and integrates its business and R&D activities with its IP activities. We own approximately 36,000 patents and file about 8,000 applications every year in Japan and overseas for a portfolio of competitive patents around the world.

## Structure of the Intellectual Property Division

Our IP promotion activities are managed at our IP division at headquarters that are directly under the president and through individual IP departments at respective facilities and R&D centers. We have also established the position of IP executive officer.

The headquarters IP division formulates strategies for the entire company, promotes IP focus issues, and handles interactions with the patent office. IP departments at facilities and R&D centers strive to execute individual IP strategies within the scope of the overall strategies of the entire company. We are building an IP network and are working to enhance the effectiveness of IP activities.

### Link Business, R&D and IP Activities



## IP Strategy

The basic philosophy underlying our IP activities emphasizes enhancing IP capabilities in response to the environment and features of the IP creation cycle. These activities help to further reinforce the competitiveness of Mitsubishi Electric's businesses. The IP division and departments promote strategic IP activities through the designation of IP focus themes for businesses to concentrate on and major R&D projects.

With international standardization becoming an increasingly

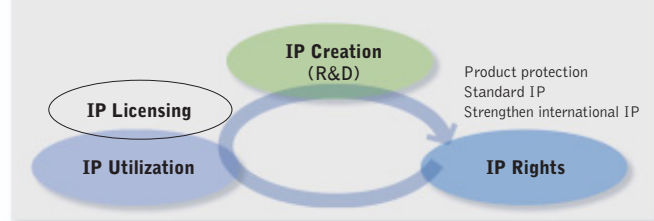
important factor, we are stepping up our activities to obtain certificated patents for standards, aiming for increasing recognition of Mitsubishi Electric technologies as international standards.

In patents related to MPEG, DVD and 3G mobile handset standards, Mitsubishi Electric has taken the lead in promoting the establishment and management of MPEGLA/DVD6C, as well as Platform WCDMA. These IP activities are contributing to the improvement and expansion of business performance.

In response to further business globalization, the acquisition of overseas IP rights is also an important matter. We have therefore dispatched to the U.S., Europe and China IP representatives who work to strengthen IP capabilities and to accelerate our global IP activities.

Preventing infringement on intellectual property rights by other companies is another important aspect of our efforts. We are taking rigorous measures to eradicate counterfeiting by working closely with relevant industry associations and government agencies. We are also working to reinforce in-house measures, such as amending company regulations, designed to manage confidential IP material and prevent the leaking of it.

### IP Creation Cycle and IP Activities



### External Invention Prize

2006 National Commendation for Invention held by the Japan Institute of Invention and Innovation (JIII)

#### The 21st Century Invention Prize: Mitsubishi Ozonizer

*Efficiently generates the world's highest concentration ozone*

This "high concentration ozone generating equipment" is expected to contribute to the realization of a material cycle oriented society in the 21st century, particularly in operations such as wastewater treatment and semiconductor cleaning processes, which use harmful chemicals.

## Mitsubishi Electric's Core Technologies and Patents

SEGMENT	FIELD	CORE TECHNOLOGIES/PATENTS/PRODUCTS
<b>Energy and Electric Systems</b>	Power Systems	Power generation systems, Substation systems, Power distribution systems, Insulation technology, Large-current control systems
	Transportation Systems	Vehicle propulsion systems, Rail traffic control technology, In-car data systems
	Elevators/Escalators	Machinerom-less elevators, Variable speed elevators
	Supervisory Control Systems	Scalable display technology, Individual authentication technology
<b>Industrial Automation Systems</b>	Factory Automation Products and Systems	Factory network (CC-link), Computerized numerical controllers, AC servos, Inverters, Electrical discharge machines, High-power laser processing equipment
	Measurement and Control Systems	Energy diagnosis technology, Power meters, EcoMonitor
	Automotive Electric & Electronic Products and Car Multimedia Systems	Electric power steering, High-efficiency alternators, High-power starters, Onboard ETC equipment, Car navigation systems
	<b>Information and Communication Systems</b>	Mobile Handsets and Base Stations
Space, Satellite Communication Systems		Satellites, LBS, Positioning augmentation services (PAS), Satellite casing materials, Posture control technology
Antennas and Radar Devices		Antennas, Microwave and millimeter wave technology, Tracking and signal processing technology
Information Communications Network Systems		Power line communication systems, Home networking technology, Optical access technology
<b>Electronic Devices</b>	Power Devices	Power transistors, Power modules
	High Frequency and Optical Devices	Semiconductor lasers, MMIC, Optical transmissions modules
	LCDs	Display image processing technology, 3-D LCDs
<b>Home Appliances</b>	Air-Conditioning Systems	High-efficiency non-CFC compressors, High-efficiency heat exchangers
	Solar Power Generation Systems	Solar battery cells, Power conditioners
	Projection TVs	Optical engineering technology, Color management technology
	DVD Recorders and Players	Disc formatting, Visual and audio recording and summarization, MPEG encoding technology