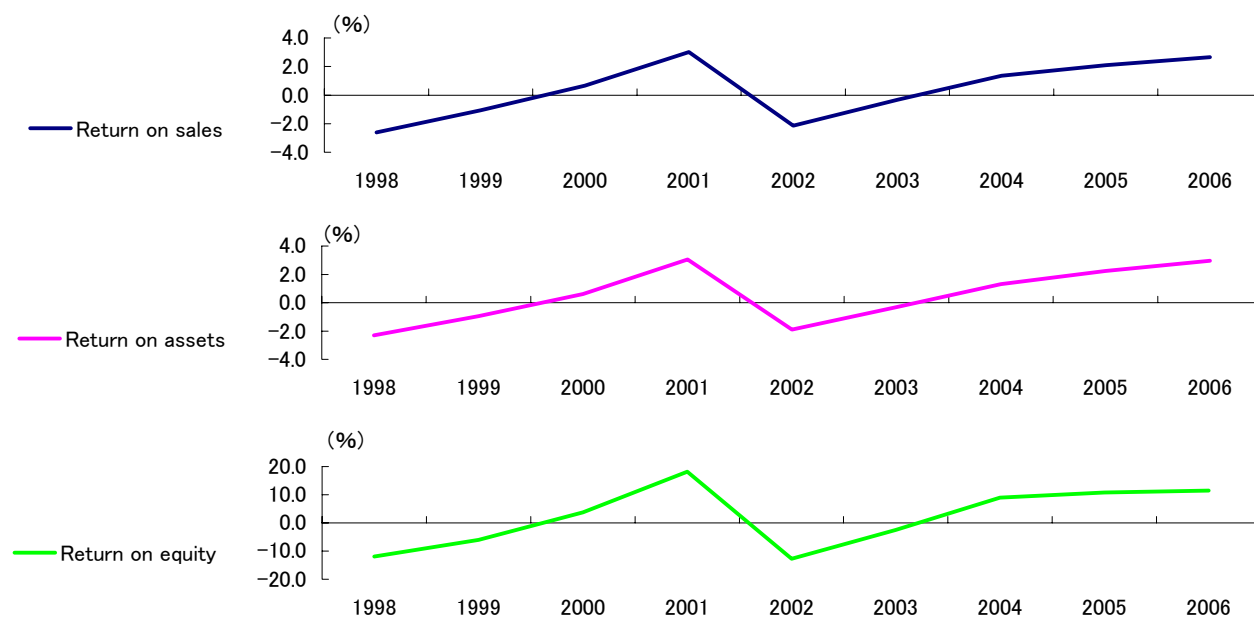
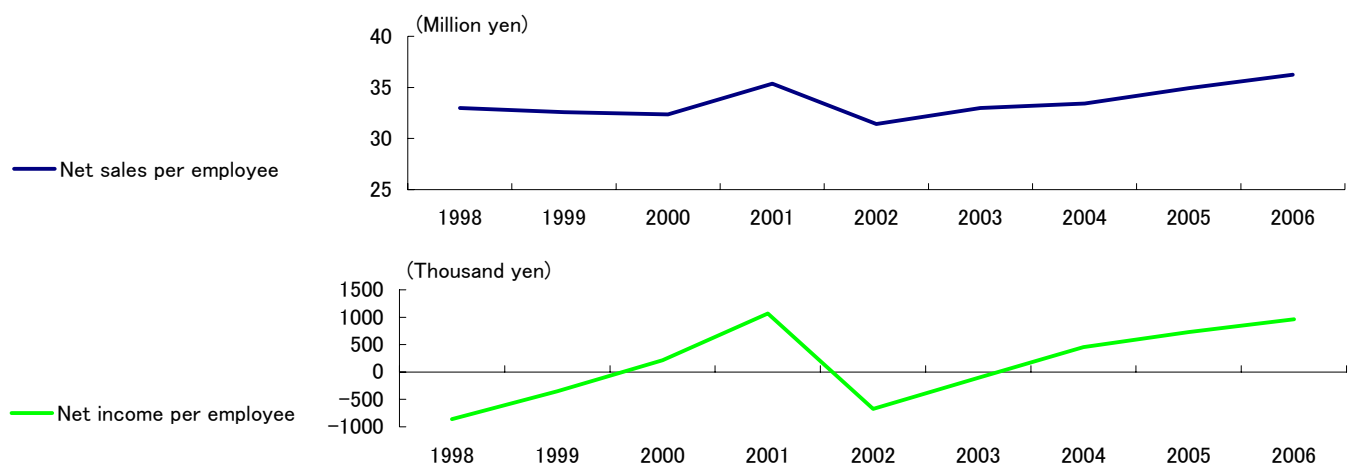


PROFITABILITY AND PER EMPLOYEE DATA

Return on Sales, Return on Assets and Return on Equity



Net Sales per Employee and Net Income per Employee



(Years ended March 31)

	1998	1999	2000	2001	2002	2003	2004	2005	2006
Return on sales (%)	(2.6)	(1.1)	0.7	3.0	(2.1)	(0.3)	1.4	2.1	2.7
Return on assets (%)	(2.3)	(0.9)	0.6	3.0	(1.9)	(0.3)	1.3	2.2	3.0
Return on equity (%)	(11.9)	(6.0)	3.8	18.2	(12.8)	(2.5)	9.0	10.8	11.5

	1998	1999	2000	2001	2002	2003	2004	2005	2006
Number of employees	115,206	116,479	116,588	116,715	116,192	110,279	98,988	97,661	99,444
Net sales per employee (Thousand yen)	32,996	32,573	32,372	35,381	31,405	32,999	33,435	34,924	36,243
Net income per employee (Thousand yen)	(861)	(349)	213	1,069	(671)	(107)	453	729	962