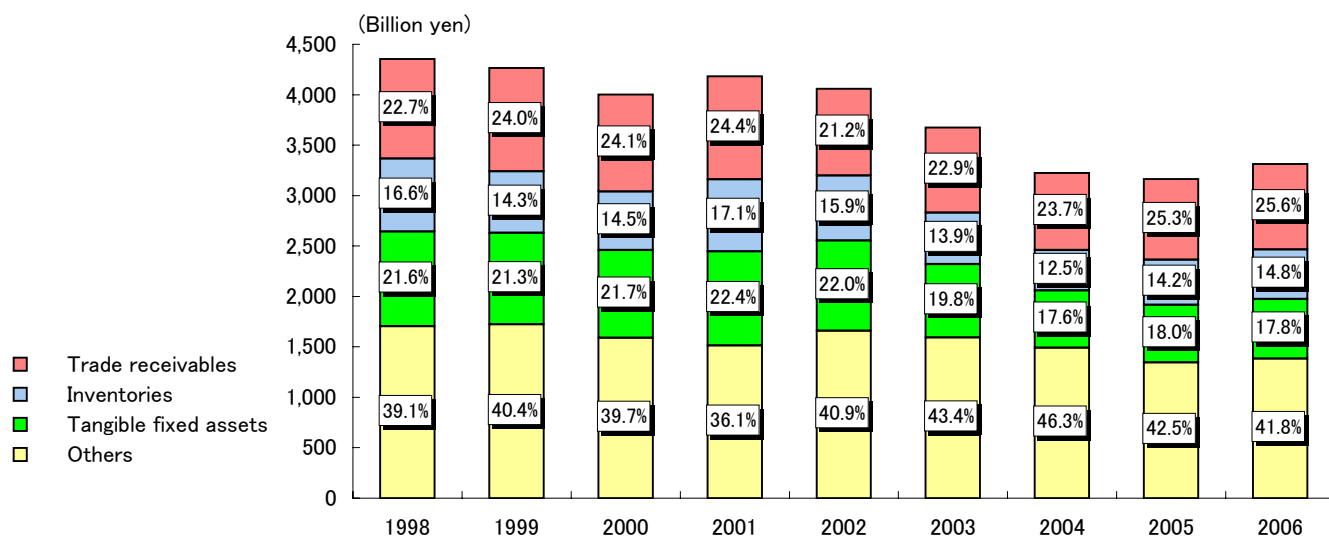
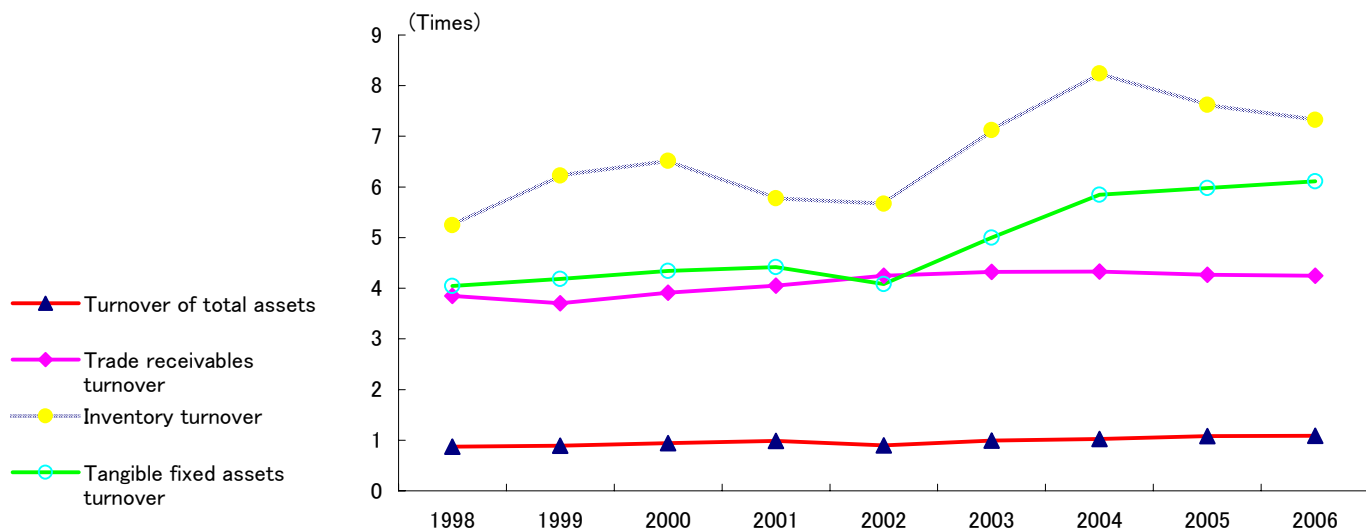


# ASSETS AND TURNOVER

## Assets Components and Total Assets



## Turnover



(Years ended March 31)

	1998	1999	2000	2001	2002	2003	2004	2005	2006
Total assets (Million yen)	4,354,863	4,265,350	4,003,294	4,181,629	4,057,404	3,673,637	3,225,223	3,162,472	3,313,742
Trade receivables (Million yen)	987,023	1,024,901	964,167	1,019,533	858,967	841,738	764,291	799,163	847,978
Inventories (Million yen)	724,958	609,459	579,023	714,529	643,642	510,750	401,619	447,382	491,950
Tangible fixed assets (Million yen)	939,211	907,389	868,795	934,759	893,965	727,770	566,383	570,660	589,998

Turnover of total assets (Times)	0.87	0.89	0.94	0.99	0.90	0.99	1.03	1.08	1.09
Trade receivables turnover (Times)	3.85	3.70	3.91	4.05	4.25	4.32	4.33	4.27	4.25
Inventory turnover (Times)	5.24	6.23	6.52	5.78	5.67	7.12	8.24	7.62	7.33
Tangible fixed assets turnover (Times)	4.05	4.18	4.34	4.42	4.08	5.00	5.84	5.98	6.11