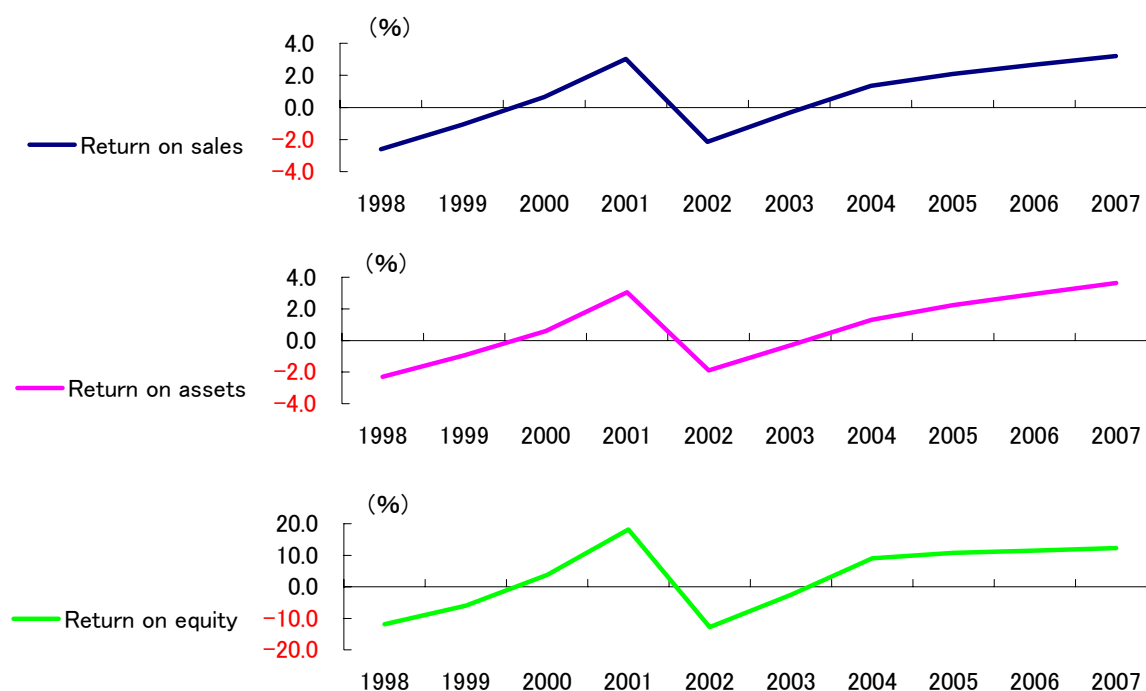
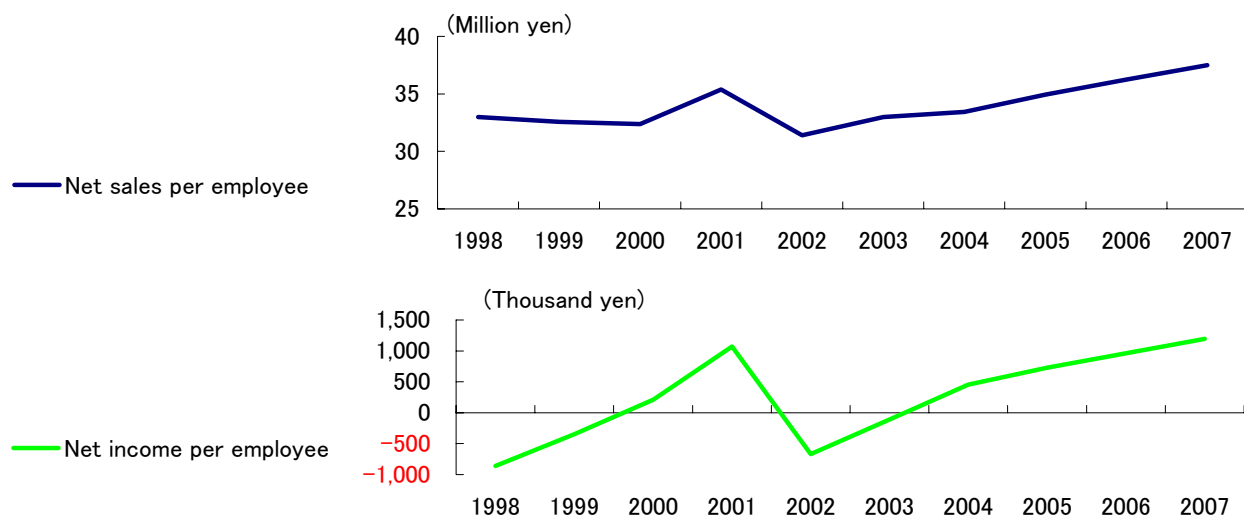


# PROFITABILITY AND PER EMPLOYEE DATA

## Return on Sales, Return on Assets and Return on Equity



## Net Sales per Employee and Net Income per Employee



	1998	1999	2000	2001	2002	2003	2004	2005	2006	2007
Return on sales	(2.6)	(1.1)	0.7	3.0	(2.1)	(0.3)	1.4	2.1	2.7	3.2
Return on assets	(2.3)	(0.9)	0.6	3.0	(1.9)	(0.3)	1.3	2.2	3.0	3.6
Return on equity	(11.9)	(6.0)	3.8	18.2	(12.8)	(2.5)	9.0	10.8	11.5	12.3

	1998	1999	2000	2001	2002	2003	2004	2005	2006	2007
Number of employees	115,206	116,479	116,588	116,715	116,192	110,279	98,988	97,661	99,444	102,835
Net sales per employee	32,996	32,573	32,372	35,381	31,405	32,999	33,435	34,924	36,243	37,494
Net income per employee	(861)	(349)	213	1,069	(671)	(107)	453	729	962	1,197