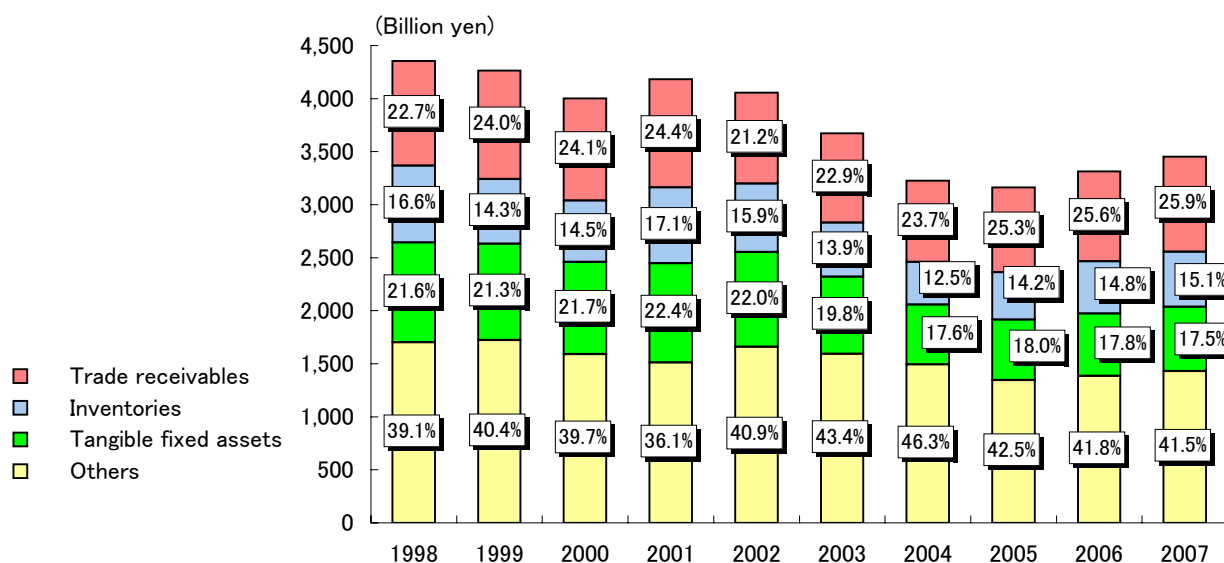
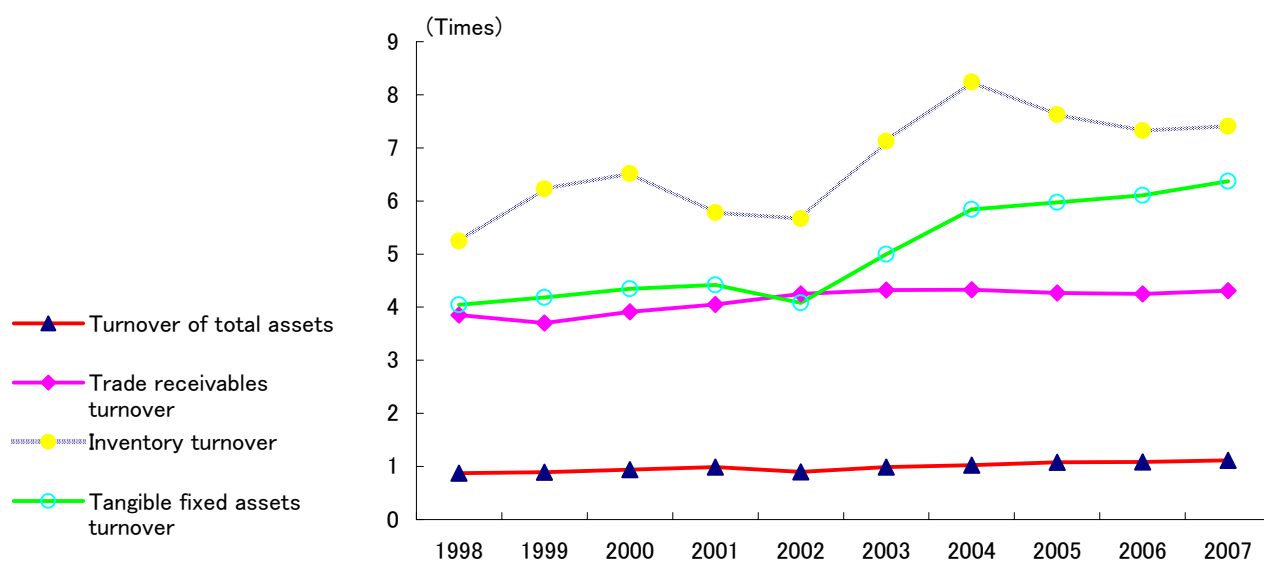


ASSETS AND TURNOVER

Assets Components and Total Assets



Turnover



(Million yen)

	1998	1999	2000	2001	2002	2003	2004	2005	2006	2007
Total assets	4,354,863	4,265,350	4,003,294	4,181,629	4,057,404	3,673,637	3,225,223	3,162,472	3,313,742	3,452,231
Trade receivables	987,023	1,024,901	964,167	1,019,533	858,967	841,738	764,291	799,163	847,978	894,982
Inventories	724,958	609,459	579,023	714,529	643,642	510,750	401,619	447,382	491,950	520,238
Tangible fixed assets	939,211	907,389	868,795	934,759	893,965	727,770	566,383	570,660	589,998	605,285

(Times)

	1998	1999	2000	2001	2002	2003	2004	2005	2006	2007
Turnover of total assets	0.87	0.89	0.94	0.99	0.90	0.99	1.03	1.08	1.09	1.12
Trade receivables turnover	3.85	3.70	3.91	4.05	4.25	4.32	4.33	4.27	4.25	4.31
Inventory turnover	5.24	6.23	6.52	5.78	5.67	7.12	8.24	7.62	7.33	7.41
Tangible fixed assets turnover	4.05	4.18	4.34	4.42	4.08	5.00	5.84	5.98	6.11	6.37