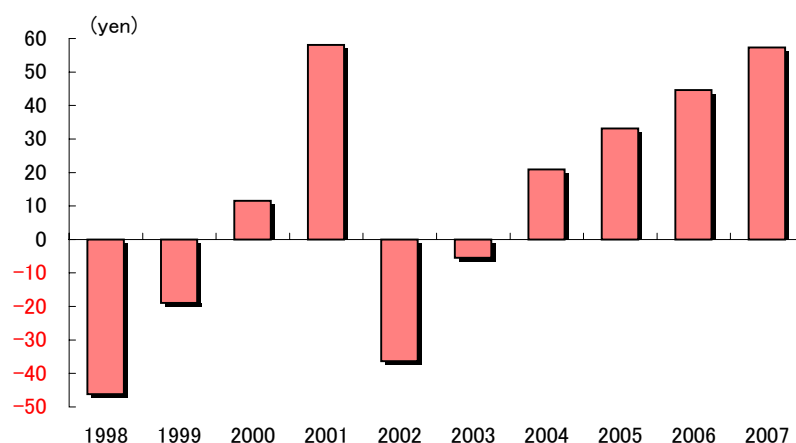
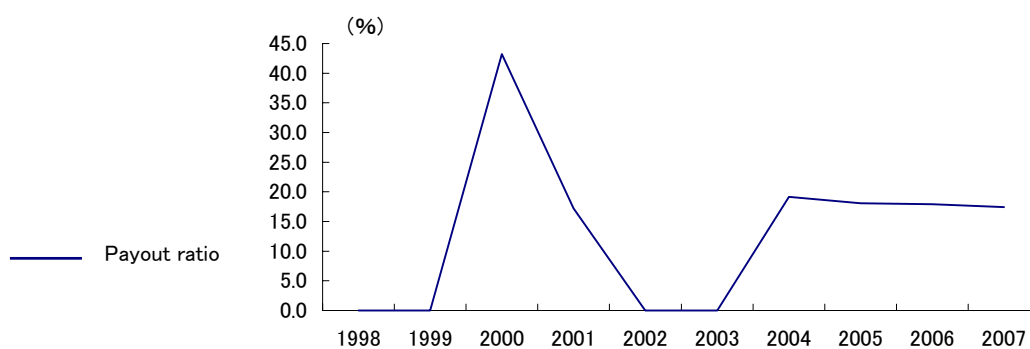
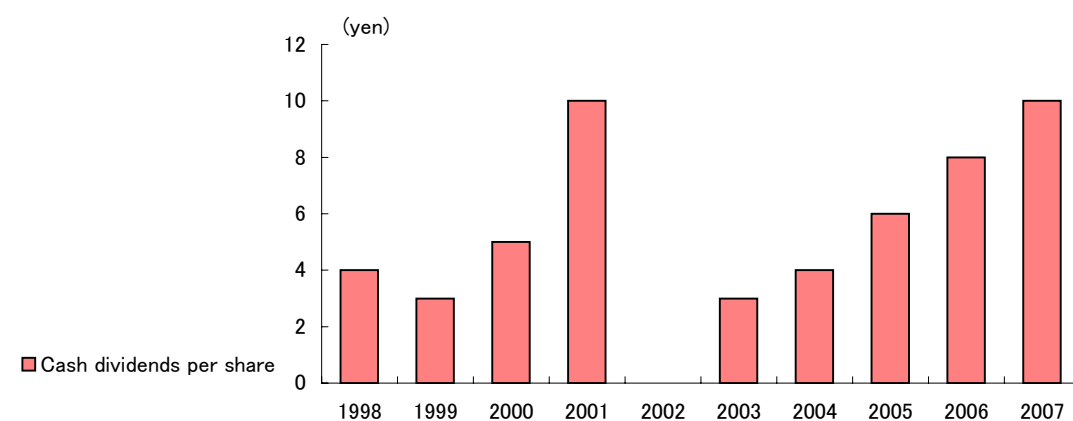


## PER SHARE DATA

### Net Income (Loss) per Share



### Cash Dividends per Share and Payout Ratio



	1998	1999	2000	2001	2002	2003	2004	2005	2006	2007
Net income (loss) per share	(46.2)	(18.9)	11.6	58.1	(36.3)	(5.5)	20.9	33.2	44.6	57.3
Cash dividends per share	4.0	3.0	5.0	10.0	—	3.0	4.0	6.0	8.0	10.0
Payout ratio (%)	—	—	43.2	17.2	—	—	19.1	18.1	17.9	17.4

(Yen)